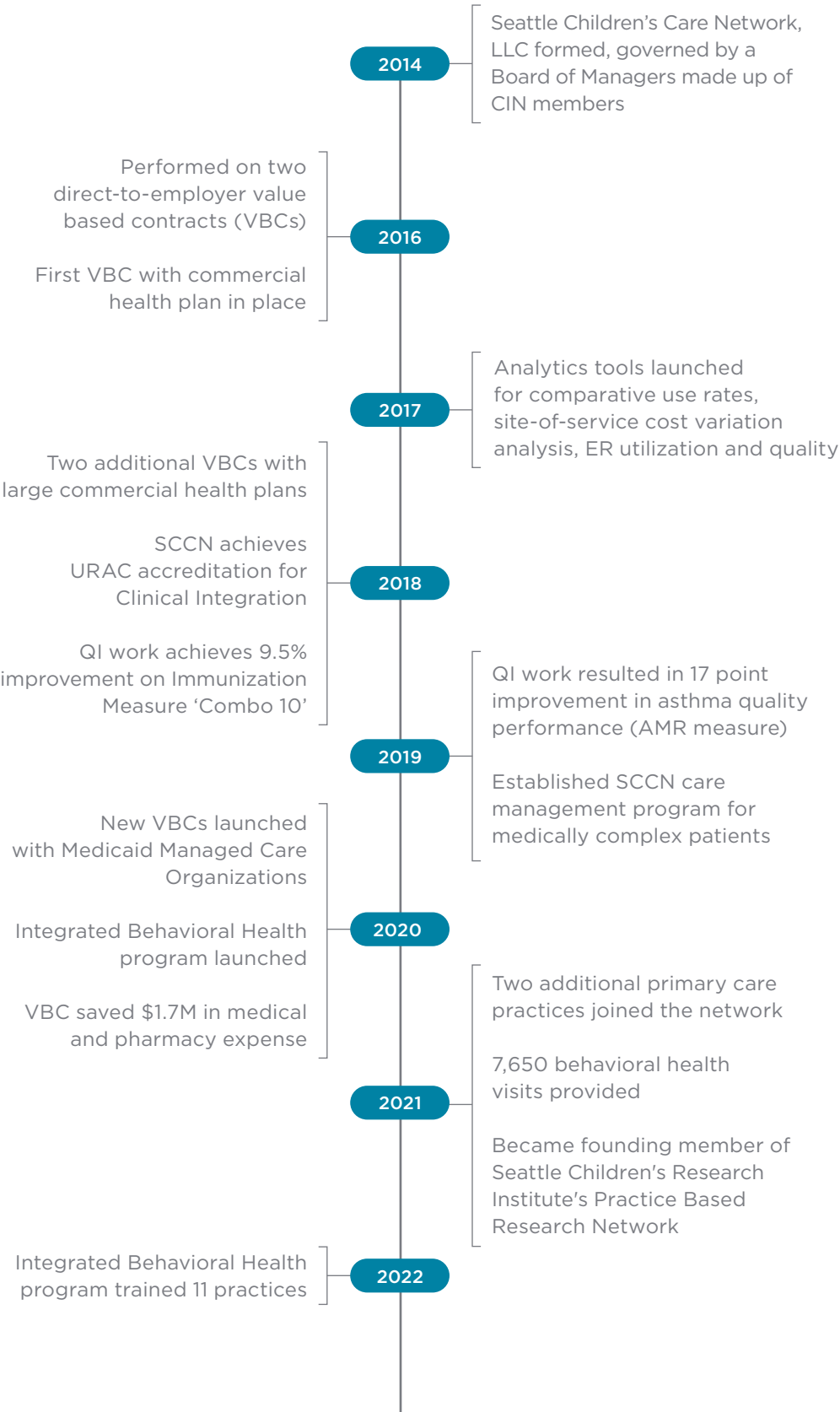


OUR HISTORY



OUR MISSION

To be the best manager of pediatric lives in the Pacific Northwest with superior clinical outcomes and exceptional patient and provider experience while decreasing cost trends.

OUR VISION

Seattle Children's Care Network will be the best performer on quality, cost and experience while being an essential partner to groups, delivering value, contracts, financial return and collaboration.

WE WILL

- Actively and transparently share performance data with practices
- Engage physician leadership in decision making through a robust structure of a Board of Managers, committees and working groups
- Pursue value based contracts on behalf of the network
- Engage payers (health plans, government agencies and employers) in promoting value based care in the community
- Distribute shared savings and performance incentives under SCCN Board of Managers' direction
- Develop data systems and processes that support coordinated care and clinical integration
- Facilitate clinically integrated network activities, including evidence-based medicine and forums to share best practices
- Maintain a culture of transparent and accountable coordination of care with patients and providers
- Collaborate with practices to develop clinical guidelines that improve quality, coordinate care and manage cost for the children we serve
- Implement data collection, quality measurement and care coordination tools

OUR VALUES

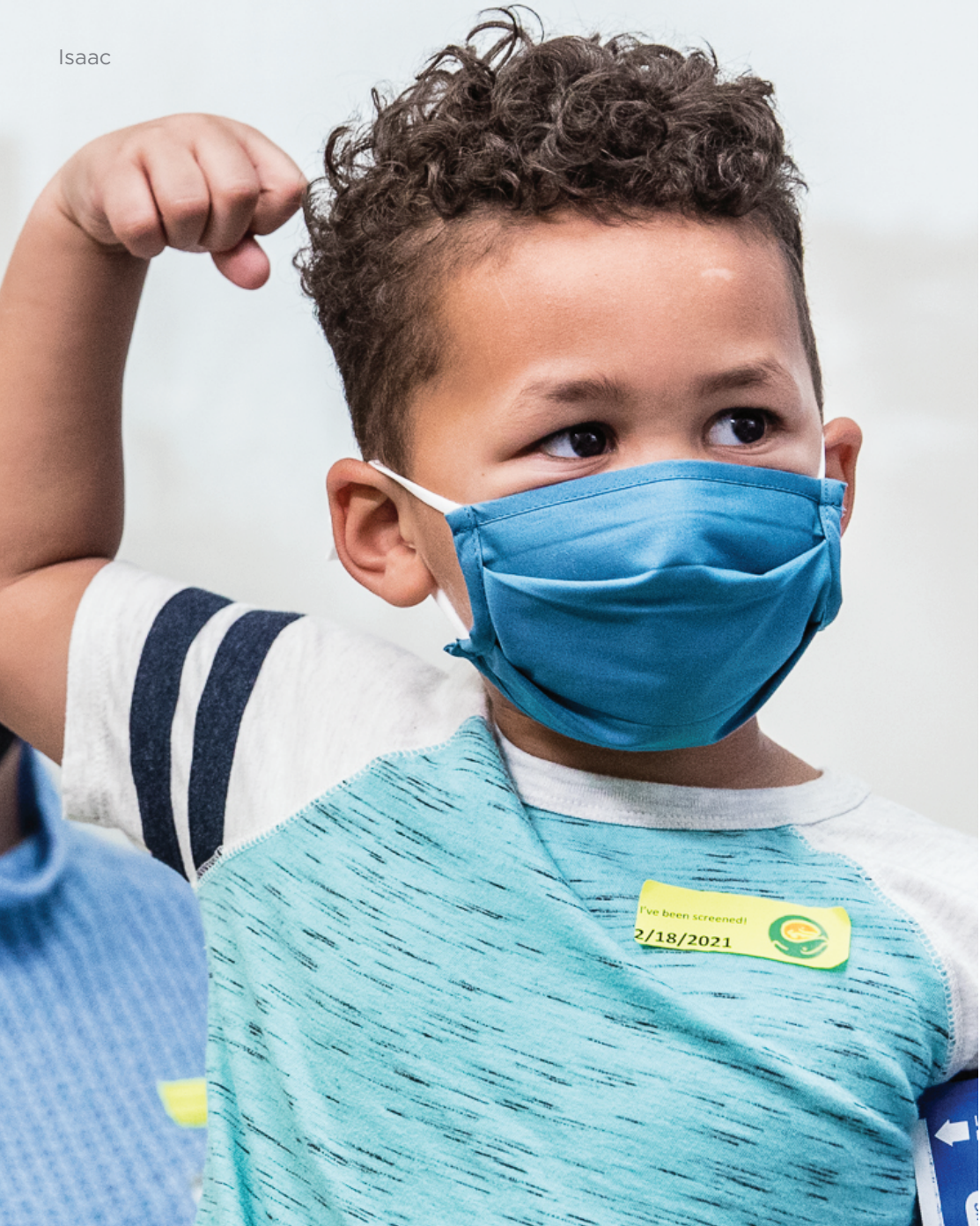


SEATTLE CHILDREN'S CARE NETWORK

- |                                     |                                    |
|-------------------------------------|------------------------------------|
| Seattle Children's Hospital         | Odessa Brown Children's Clinic     |
| Children's University Medical Group | Olympia Pediatrics                 |
| Bainbridge Pediatrics               | Pediatric Assoc. of Whidbey Island |
| Ballard Pediatric Clinic            | Renton Pediatric Associates        |
| HopeCentral                         | Richmond Pediatrics                |
| Kitsap Children's Clinic            | Skagit Pediatrics                  |
| Mercer Island Pediatrics            | South Sound Pediatrics             |
| North Seattle Pediatrics            | University Place Pediatric Clinic  |
| Northwest Pediatric Center          | Woodinville Pediatric Clinic       |

Reach out today and learn how the SCCN can partner with your medical group.  
Ginger Hines, Executive Director, [Ginger.Hines@seattlechildrens.org](mailto:Ginger.Hines@seattlechildrens.org)  
Sheryl Morelli, MD, Chief Medical Officer, [Sheryl.Morelli@seattlechildrens.org](mailto:Sheryl.Morelli@seattlechildrens.org)

Isaac



FACTS AND STATS  
Summer 2022

A pediatric organized system of care formed as a collaboration among physicians, other providers and administrators who share a commitment to transform care and proactively respond to the changing healthcare landscape.

Visit [SeattleCCN.org](https://SeattleCCN.org)





## WHAT MAKES SCCN UNIQUE?

- Exclusive focus on children's health
- Integration and partnership with Seattle Children's Hospital, a premier pediatric hospital partner, and Children's University Medical Group
- A strong spirit of collegiality and collaboration within the network, focused on improving care for children
- Recognition and trust as change agent and influencer for children's health improvement
- Innovative partnerships with health plan partners, seeking to advance the health of children together
- Provision of pediatric-focused resources and capabilities for our network participants
- Founding member of Seattle Children's Research Institute's Practice Based Research Network



## OUR ACCOMPLISHMENTS

- SCCN consistently earns highest quality performance rating with health plans
- Saved more than \$4.7M in medical and pharmacy expense in VBCs
- Expanded Integrated Behavioral Health program
- Maintenance of Certification IV: Immunizations, Asthma, Integrated Behavioral Health and Antibiotic Stewardship
- Training about value based care competencies delivered
- Pediatric care management services offered to plans, partners
- Patient Centered Medical Home (PCMH) change support
- URAC Accreditation



## OUR KUDOS AND ACCREDITATIONS

- URAC accreditation for clinical integration
- Rated "Best in Class" by large health plan partner for avoidable ER visits and high ER utilizers
- Patient/family experience survey scores 90%+ for primary care service excellence



## SCCN TRANSFORMATIONAL ACTIVITIES

### Quality and Care Transformation

#### Engagement

- Bimonthly Quality and Clinical Transformation Committee meetings focused on improvement and clinical transformation opportunities, supported by subgroups: Innovate, Unite, and Research
- Frequent Practice Manager operations meetings to share best practices and approaches
- Ask the Expert series: COVID-19, Behavioral Health

#### Transformation Initiatives

- NCQA Patient Centered Medical Home Recognition
- Integrated Behavioral Health Program
- Outpatient Antibiotic Stewardship dashboard and toolkits

#### Care Management

- Evidence-based standard care management program (blended centralized and de-centralized approach)
- SCCN care manager supports practices in communication with SCH specialty clinics as needed or if barriers are noted
- Pediatric care management program offered for children with complex medical conditions

### Information Technology Helps Transform Care Delivery

#### Population Health Tool, Arcadia

- Patient registries—Quality measures, care gaps—EMR and care management workflow integration

#### Milliman's MedInsight Tool

- Quality performance
- Risk coding
- Cost and utilization

#### Collective Medical

- Regular review of ED/Inpatient encounters
- Coordination and outreach to practices

#### SCCN Pulse

- On-demand self-serve reports to help practices manage care

#### Enterprise Data Warehouse

- Data integration platform enables analyses on populations to support cost, quality, diagnosis risk scoring, and programmatic improvement initiatives across SCCN

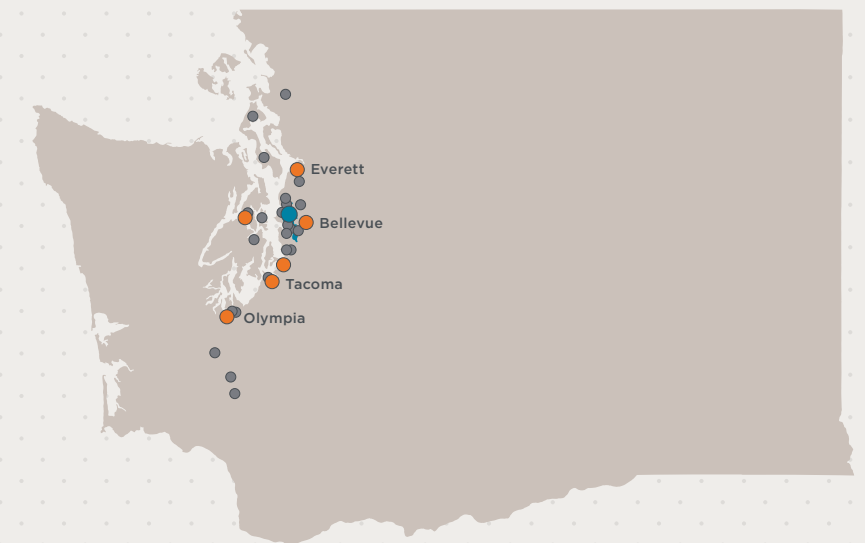
#### The HUB

- Private, secure tool to support communication and collaboration for all network operations and initiatives
- Trainings, toolkits, and reference materials

#### HIPAA Compliant Document Sharing

- Encrypted email and communication tools

## WESTERN WASHINGTON PRIMARY CARE



### 1 Hospital



### 6 Puget Sound Regional Specialty Clinics

- Everett
- Bellevue
- Federal Way
- Olympia
- Tacoma
- Silverdale



### 23 Primary Care Locations

## OUR LOCATIONS

Bainbridge Pediatrics

Ballard Pediatric Clinic

HopeCentral

Kitsap Children's Clinic  
(2 Locations)

Mercer Island Pediatrics

North Seattle Pediatrics

Northwest Pediatric Center  
(3 Locations)

Odessa Brown Children's Clinic  
(2 Locations)

Olympia Pediatrics

Pediatric Associates of Whidbey Island  
(2 Locations)

Renton Pediatric Associates  
(2 Locations)

Richmond Pediatrics

Skagit Pediatrics

South Sound Pediatric Associates

University Place Pediatric Clinic

Woodinville Pediatric Clinic  
(2 Locations)